

Make from a  $1\frac{3}{4}$ " straight rod with a Maine Steel, Inc. straight hole eye drop forged on each end. Rod to be hand forged to curve of shackle.

MARK	A	B	C	D
BR76-1A	147-10 <sup>1/2</sup> "	146-4 <sup>1/4</sup> "	146-4 <sup>1/2</sup> "	147-4 <sup>1/4</sup> "
BR76-1B	187-13 <sup>1/2</sup> "	185-11 <sup>1/2</sup> "	186-0 <sup>1/2</sup> "	188-11 <sup>1/2</sup> "
BR76-1C	234-11 <sup>1/2</sup> "	233-10 <sup>1/2</sup> "	233-10 <sup>1/2</sup> "	236-10 <sup>1/2</sup> "

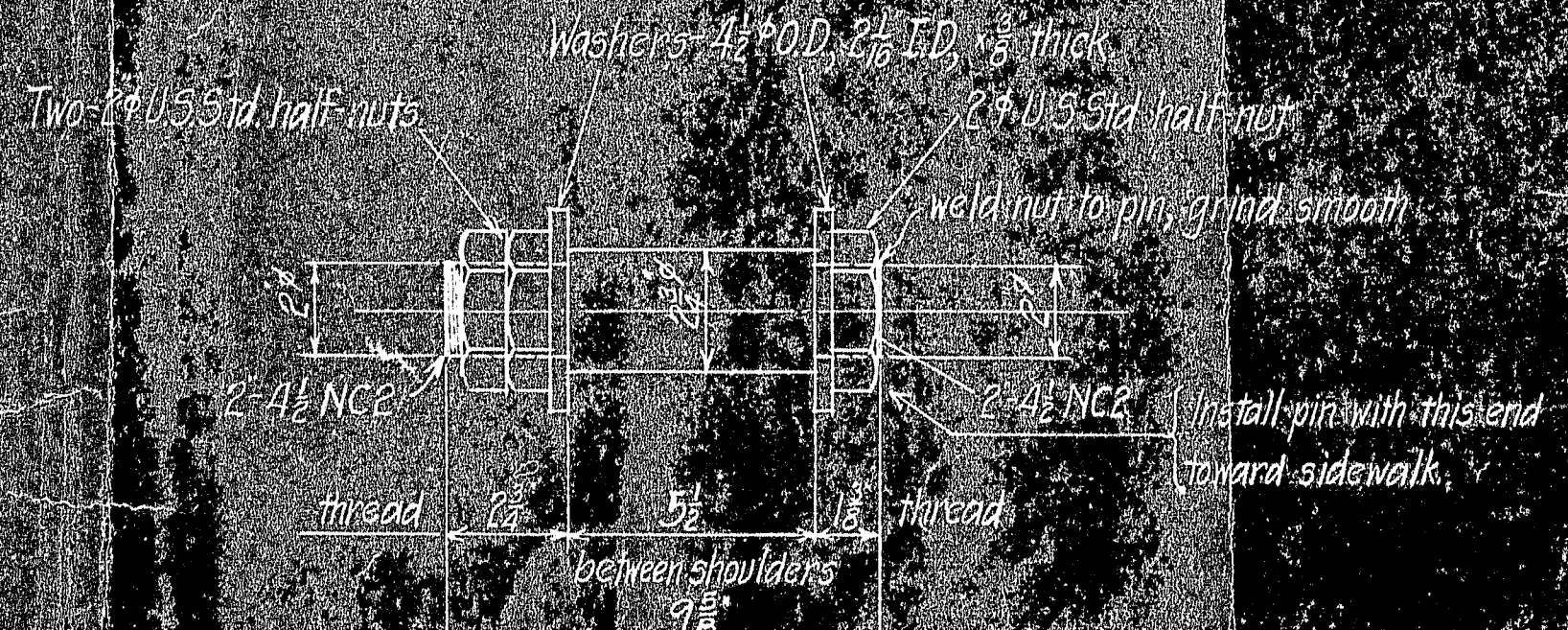


BR76-1H STIRRUP R.H. THREAD  
BR76-1J STIRRUP L.H. THREAD  
SAE 1045

CABLE BAND BOLT - BR 76-1E

CABLE BAND BOLT - BR76-16

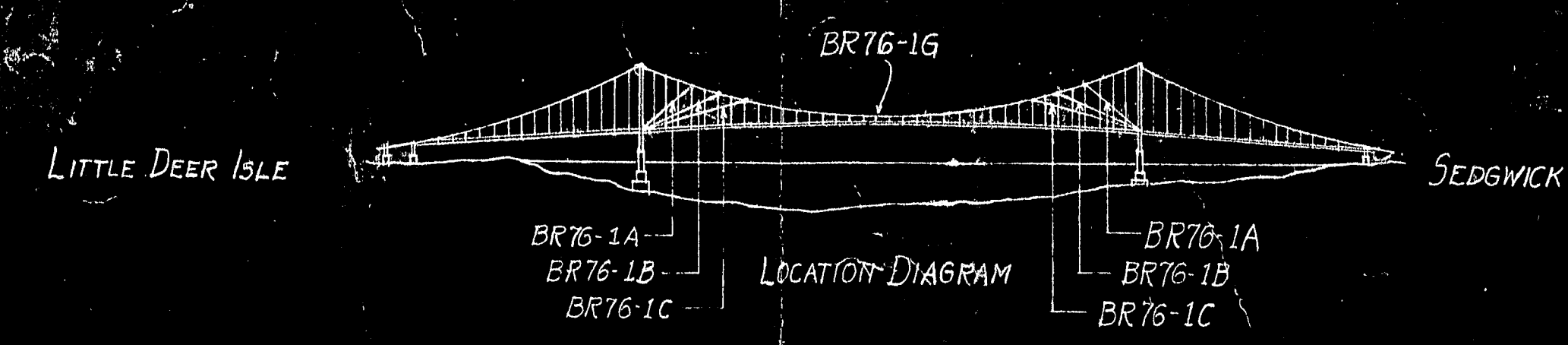
Material { Washers & nuts-steel  
Bolt - SAE 3140 without heat treatment [nickel alloy]



OPEN SOCKET PIN - BR76-1F

Nuts and washers must draw up tightly against shoulder.

Material:- T & G. Shafting - SAE: 1045.



Paint:- One shop coat of red lead, except galvanized steel, and turned bolts and pins and threads. Threads and turned surfaces of pins to be coated with grease.

BR76-1J	12	SEE NOTE	STIRRUP	
BR76-1H	12	"	STIRRUP	
BR76-1G	12	SEE NOTE	CABLE BAND BOLT	ASSEMBLED COMPLETE
BR76-1F	14	"	OPEN SOCKET PIN	
BR76-1E	12	"	CABLE BAND BOLT	
BR76-1D	12	"	SHACKLE	
BR76-1C	4	"	CABLE STAY	
BR76-1B	4	"	CABLE STAY	
BR76-1A	4	"	CABLE STAY	
UNKN	4	SEE NOTE	BR76-2	

MARK	REQ'D	MAT'L	REQ. NO.	NAME	REMARKS
BILL OF MATERIAL					

**JOHN A. ROEBLING'S SONS CO., TRENTON, N. J.**

DEER ISLE-SEDGWICK BRIDGE DISTRICT  
BRIDGE OVER EGGEMOSSIN REACH  
HANCOCK CO., MAINE

## CABLE STAYS

	APPROVED	SCALE	SERIAL	SHEET
ROBINSON & STEINMAN ENGINEERS	12-12-38	DES DR AFS 11-25-37 TR	BR76	1
CH. DR. <i>W. H. H. H.</i> ENG'R	11-12-38	CH'NG 11-25-37		

